



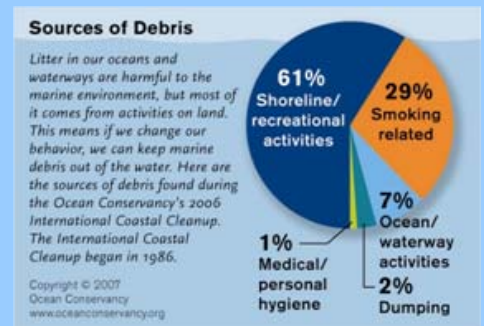
❖ In August 1997, an island of plastic and debris **Twice the size of Texas** was discovered in the Pacific Ocean

❖ The majority of plastic debris that finds its way in the ocean comes from disposable products used on land

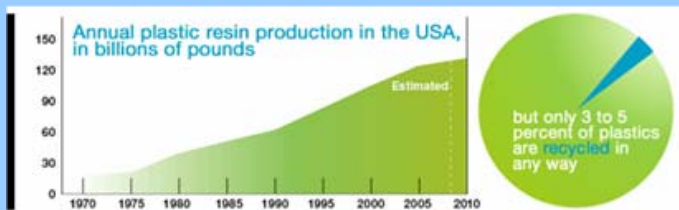
❖ Plastic debris can be lethal to wildlife. (Plastic bags are ingested by sea turtles, fishing line entangles birds and other wildlife)

❖ Plastic does not biodegrade. It photo-degrades into smaller and smaller plastic particles. These particles are ingested by marine organisms and make their way up the food chain.

❖ Last year 11,000 tons of debris and trash were collected from Sarasota Bay. The majority was plastic.



“Except for the small amount that’s been incinerated—and it’s a very small amount—every bit of plastic ever made made still exists.”





Plastic Ocean

What can you do to help?

- ❖ Buy and Use less plastic
- ❖ Recycle all the plastic you can
- ❖ Keep plastic out of ditches, canals and waterways.
- ❖ Participate in a coastal cleanup
 - Contact the Ocean Conservancy at www.oceanconservancy.org
 - Contact Keep Sarasota County Beautiful

“You can never throw anything away. There is no “away”. It all ends up somewhere.”