

Ghawazee Coat Pattern/Instructions by Durrah

Copyright Durrah 2008, please do not redistribute without permission.
Originally posted in 2000 on Tala's Middle Eastern Dance Homepage.

A Ghawazee is a very simple coat based on a rectangular pattern (you've gotta love those), with a tightly-fitted bodice with an open front that buttons from neckline to waist or hips, tight sleeves that attach to the bodice only at the top, leaving the underarm open, reaching to the elbow with long tippets (strips of fabric that hang loose from behind the elbow), and slits up the sides. There is no slit up the back. They're very easy to make, and the only moves they restrict are belly isolations (flutters, rolls, etc), since you can't see them so great beneath the fabric. You can do them, but no one can see them really.

There are many variations on the Ghawazee coat, you could make it with different-shaped sleeves, no sleeves, various lengths, various widths at the bottom hem (add gores to the sides to add fullness, instead of leaving it slit). The sleeves can be attached all the way around if you want. The variation I'm going to explain here is the one described above.

A Ghawazee can be worn over a tunic which can have sleeves in a variety of shapes. The neckline is your choice. The U-shape is the easiest to make since then the coat won't require the nice little fittings on the side of the chest which are a pain to do especially if you haven't sewn much. If you cut around the bustline, the tailoring is done all on the sides and that makes it very easy to do! Cut just into the bustline and it will give you some lift. The coat can also be worn over just a coin bra.

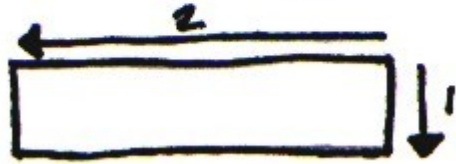
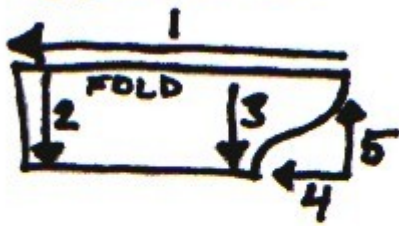
So what fabric should you choose? Well, that's really up to you, and your sewing machine's needle strength. Probably you'll want a cotton. You can also use lighter upholstery types of fabric, if you want to stay a little warmer. Cottons and cotton blends move nicer than the heavier fabrics. Linen makes a nice-looking coat. Bright colors are fun, or jewel tones. Deep, earthy colors. Patterns could be striped, floral, or whatever floats your boat. Go with your personal preference. Remember we're *American* tribal dancers.

You'll need about 2-3 yards, depending on the width of the fabric, the length you want to make it, your size, and your preferred tippet length! Draw out a pattern layout once you have your measurements to determine how much fabric you need.

Notes for sewing: **ADD SEAM ALLOWANCES!** Add however much you need. You can always cut it smaller, but you can't cut it bigger. You'll want to add three or four inches to one side of the front center for an overlap. **THIS IS VERY IMPORTANT!** Add at **LEAST** three inches, preferably four. It **MUST** overlap in the front, unless you're going to do a loop-and-button closure. Just pick a side and cut the center front out a few inches more than you need.

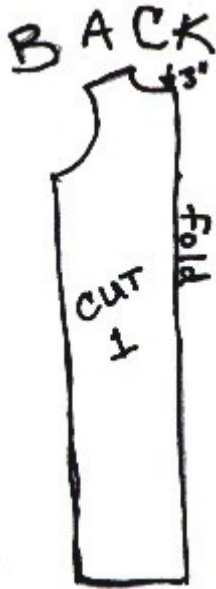
<p>FRONT</p> <p>CUT 2</p>	<p>Measurements:</p> <ol style="list-style-type: none"> 1. Length, nape of neck to desired hem (should be around mid-calf). 2. Length, nape of neck to waist. 3. Length, nape of neck to bust. 4. For this measurement, take the total waist and divide by four (there'll end up being four pieces sewn together, remember?). You'll use this same measurement for the bottom hem. 5. Bust measurement divided by four (same as above). 6. Shoulder measure from the juncture of arm and torso to wherever you want your neckline. Usually three inches or so. 7. For this and the next measurement, get a shirt/dress/top of some sort that you like the sleeve opening of, and use that to cut the arm opening. Lay the top you're using as a template on the fabric and draw a line in chalk for the armhole line. Don't forget to add for seam allowance or the armhole will be too big.
-------------------------------	-------------------------------------------------------------------------------------------------------------------------------------------------------------------------------------------------------------------------------------------------------------------------------------------------------------------------------------------------------------------------------------------------------------------------------------------------------------------------------------------------------------------------------------------------------------------------------------------------------------------------------------------------------------------------------------------------------------------------------------------------------------------------------------------------------------------------------------------------------------------------------------------------------------------------------------------------------------------

SLEEVE

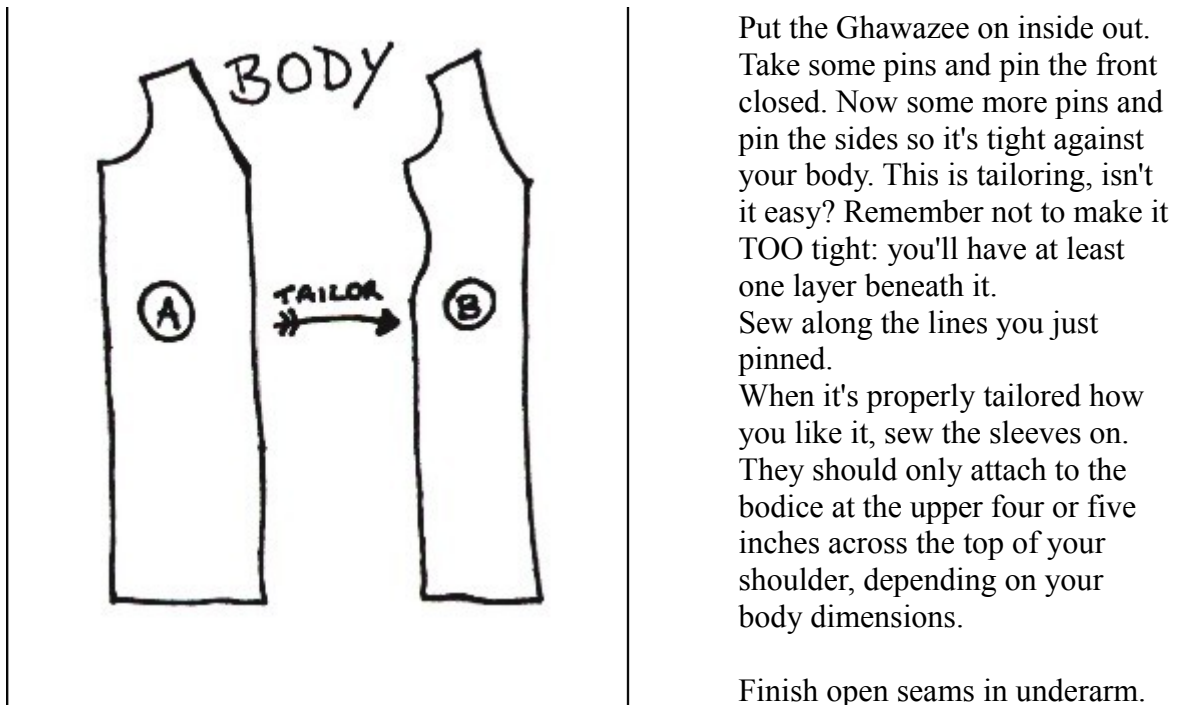


TIPPET

Cut out the pieces according to my somewhat sloppy little drawings :)
Sew the body front to the back at the shoulders and sides to waist. Leave sides open from waistline to bottom hem.



Sew sleeves at bottom seam. Finish seams along body side slits, bottom hems, and front opening.



Sew the buttonloops (or buttonholes, depending on your preference) along one side of the front center. Put it on, pull it tight, and pin the line to follow for the sewing on the buttons, then sew the buttons!

Attach the tippet by first finishing both long edges and one short edge of the tippet. Pin it onto the bottom of the sleeve so that it's behind your elbow. Sew it in place and finish up the sleeve hem.

Pick a neckline (see just above for a few variations), and sew it up!

You're done! You have a Ghawazee! Congratulations. :) You can leave off the sleeves if you so choose. I have a few without sleeves because I never got around to finishing them and then I liked the way they look without them.

You probably noticed that I didn't tell you exactly how to finish seams or necklines or hems and all that. And you're absolutely right. I'm not going to, either. There are endless sewing resources on the web. Go to the Costumer's Manifesto for great tips.