

WITH A LITTLE HELP FROM MY FRIENDS**Beatles**

V1: **C** What would you think if I sang out of tune,

G Would you stand up and **C** walk out in me.

C Lend me your ears and I'll sing you a song,

G And I'll try not to sing out of key. **C**

Ch: **Bb** I get by with a little help from my friends,

Bb I get high with a little help from my friends.

Bb Gonna try with a little help from my friends. **F** **C** **G**

V2: What do I do when my love is away.

(Does it worry you to be alone)

How do I feel by the end of the day

(Are you sad because you're on your own), No

(Chorus (without the B chord at end))

Bridge1: **Am** Do you need anybody **D**

C I need somebody to love. **Bb** **F**

Am Could it be anybody **D**

C I want somebody to love. **Bb** **F**

V3: Would you believe in a love at first sight,

Yes I'm certain that it happens all the time.

What do you see when you turn out the light,

I can't tell you but I know its mine.

(Chorus)

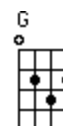
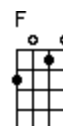
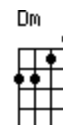
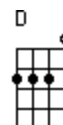
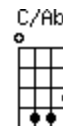
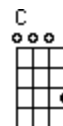
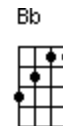
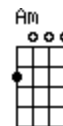
Bridge2: Do you need anybody,

I just need someone to love.

Could it be anybody,

I want somebody to love.

(Chorus)



Outro: Yes, I get by with a little help from my friends,
With a little help from my friends