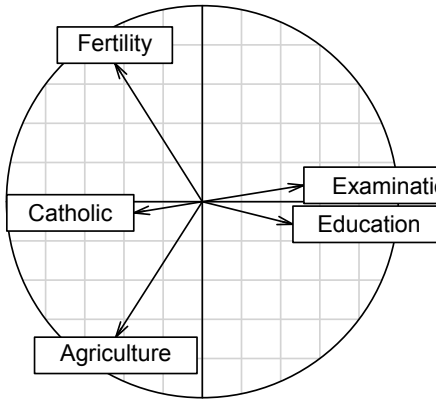
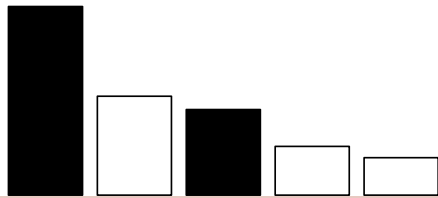


PCA 5 vars

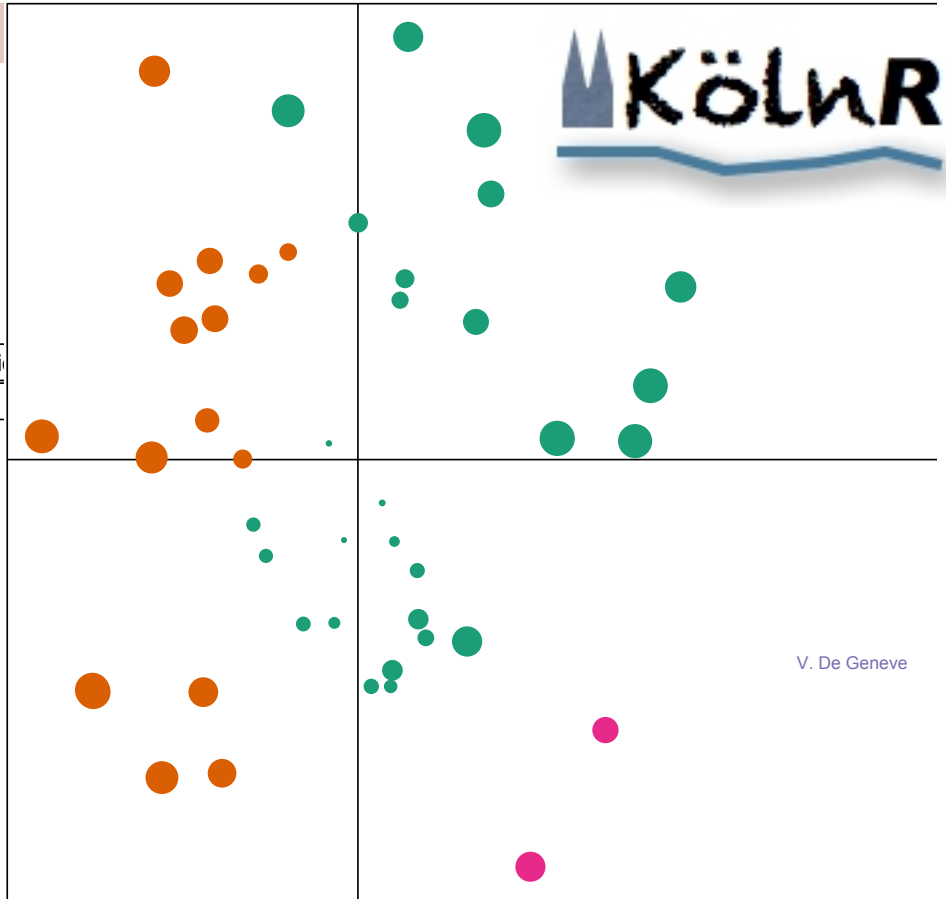
princomp(x = data, cor = cor)



(1-3) 60%



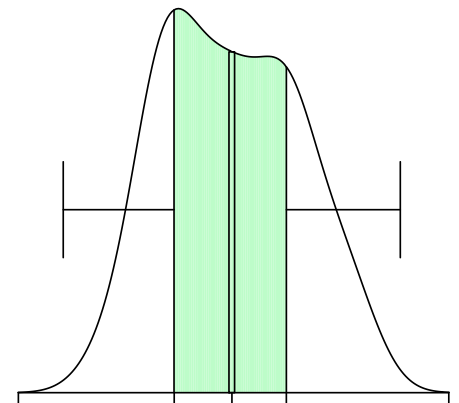
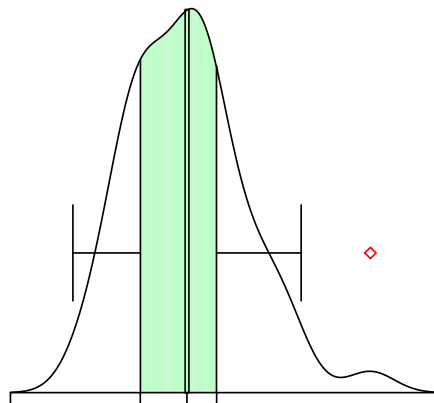
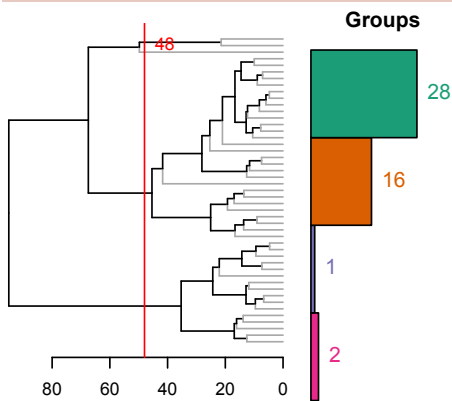
Clustering 4 groups



V. De Geneve

Factor 1 [41%]

Factor 3 [19%]



R USER GROUP

Köln, 12. April 2013



Themen:
R, Shiny, Cluster Analysis, u.a.

Anmeldung kostenlos, aber erwünscht:

<http://www.meetup.com/KoelnRUG/>

Forschungsinstitut für
Soziologie

(großer Seminarraum)

Greinstraße 2

50939 Köln

12. April 2013

Start 18:00 Uhr

Ab 20 Uhr im LUX

