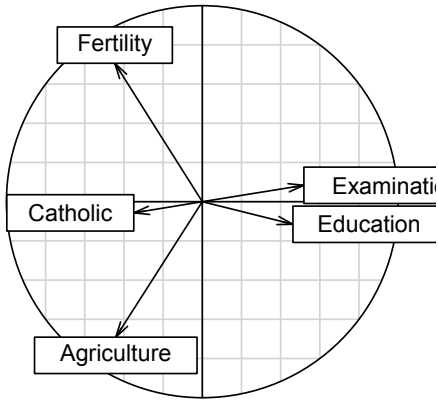
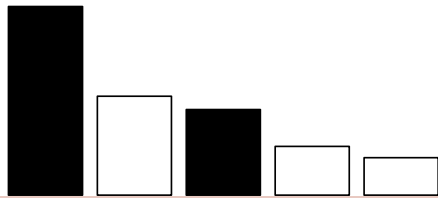


PCA 5 vars

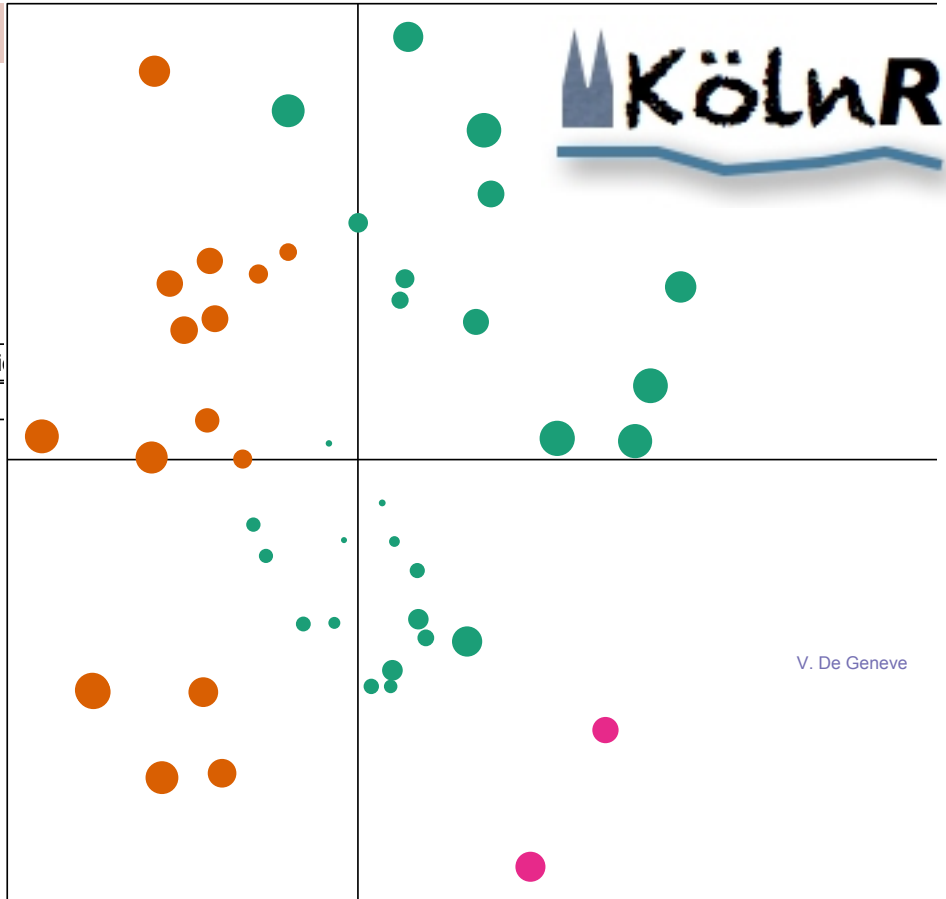
princomp(x = data, cor = cor)



(1-3) 60%



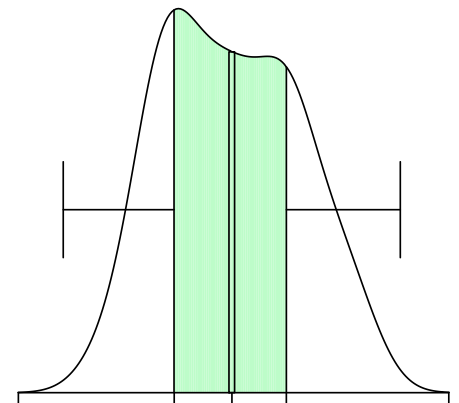
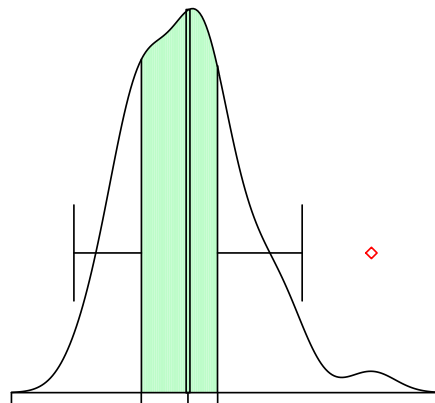
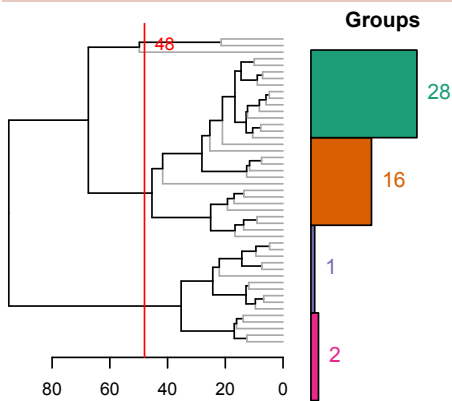
Clustering 4 groups



Factor 1 [41%]

Factor 3 [19%]

V. De Geneve



# R USER GROUP

Köln, 6. Februar 2013



## Themen:

R, Paketerstellung, roxygen, Satellitendaten, Zeitreihen, u.a.

Anmeldung kostenlos, aber erwünscht:

<http://www.meetup.com/KoelnRUG/>

Forschungsinstitut für Soziologie

(großer Seminarraum)

Greinstraße 2

50939 Köln

6. Februar 2013

Start 18:00 Uhr

Ab 20 Uhr im LUX

